

**ICC** **INDOFINE Chemical Company, Inc.**

121 Stryker Lane, Bldg. 30, Suite 1 • Hillsborough, NJ 08844 • U.S.A.

Phone: (908) 359-6778 • FAX: (908) 359-1179

website: [www.indofinechemical.com](http://www.indofinechemical.com)

e-mail: [chemical@indofinechemical.com](mailto:chemical@indofinechemical.com)

**CERTIFICATE OF ANALYSIS**

Catalog Number: G-002

Product Name: **GOSSYPIN**  
(3,5,7,8,3',4'-Hexahydroxyflavone-8-glucoside)

CAS Number: [652-78-8]

Lot Number: 98042

Chemical Formula: C<sub>21</sub>H<sub>20</sub>O<sub>13</sub>

Molecular Weight: 480.39

Melting Point: 223-225°C

Appearance: Dark yellow powder

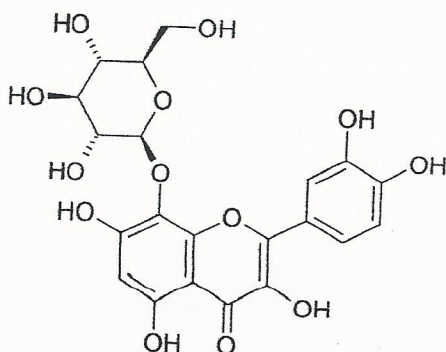
Solubility: Soluble in DMSO

TLC: n-Butanol:Acetic acid (1:1)

NMR Spectrum: Enclosed (Confirms to the structure)

Storage: Cool, dry place

Purity(HPLC): 98.07%





# INDOFINE Chemical Company, Inc.

121 Stryker Lane, Bldg. 30, Suite 1 • Hillsborough, NJ 08844 • U.S.A.

Phone: (908) 359-6778 • FAX: (908) 359-1179

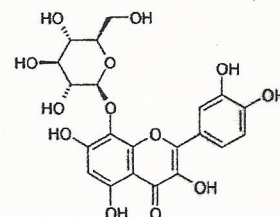
website: [www.indofinechemical.com](http://www.indofinechemical.com)

e-mail: [chemical@indofinechemical.com](mailto:chemical@indofinechemical.com)

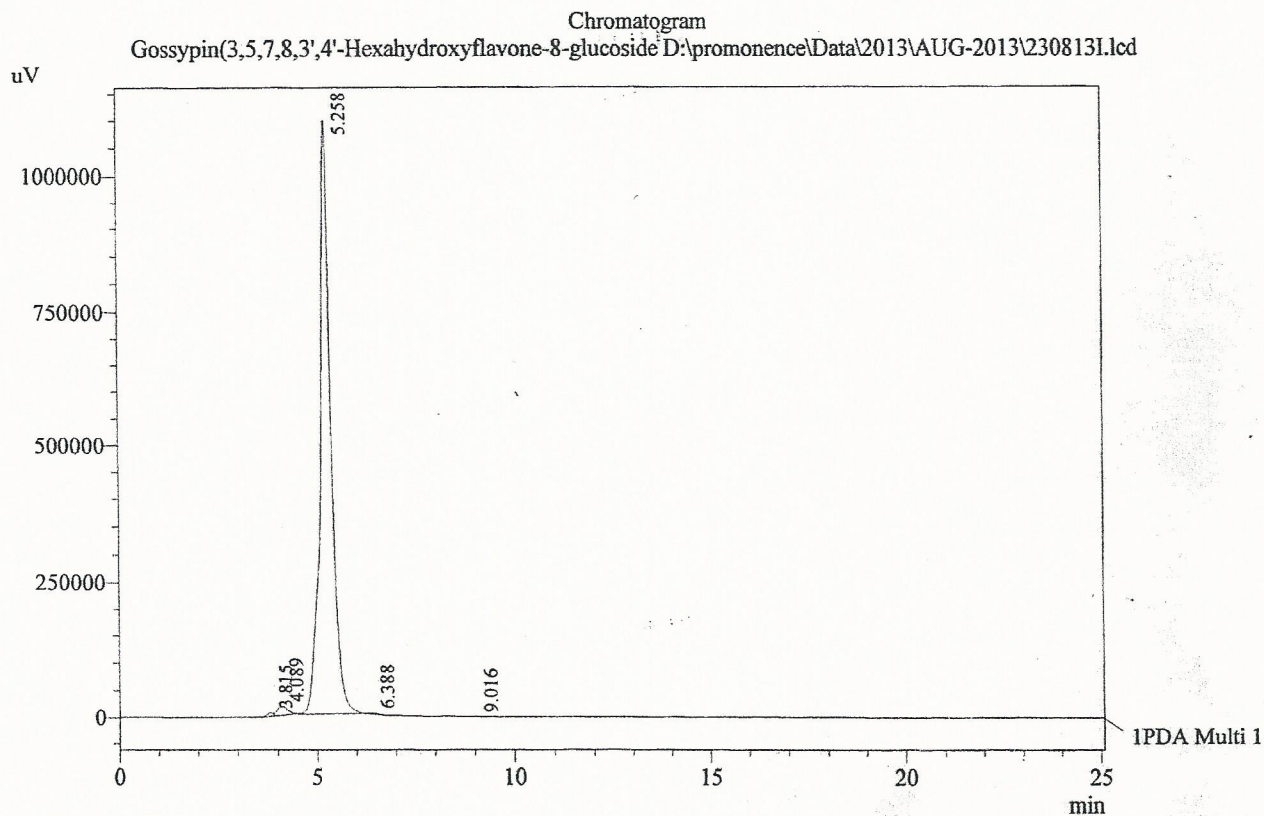
## HPLC ANALYSIS

Acquired by : Sanjeev  
 Sample Name : Gossypin(3,5,7,8,3',4'-Hexahydroxyflavone-8-glucoside  
 Sample ID : Lot No:98042  
 Injection Volume : 20 uL  
 Data Filename : 2308131.lcd  
 Method Filename : Linear Isocratic.M.lcm

Catalog No.: G-002  
 Product Name: Gossypin  
 Lot No.: 98042



Column : LUNA C-18(2), (250mm x4.6mm 5.0μ)  
 Flow : 0.500 mL/min.  
 Mobile Phase : A(50% of 0.05% TFA in water) B(50% of Acetonitrile)  
 Diluent : Mobile phase



1 PDA Multi 1 / 230nm 4nm

PeakTable

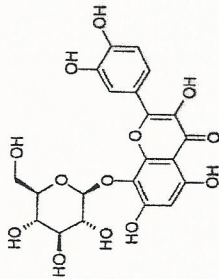
PDA Ch1 230nm 4nm

Peak#	Name	Ret. Time	Area	Area %	Relative Retention Time
1	RT:3.815	3.815	65525	0.31	0.73
2	RT:4.089	4.089	299829	1.42	0.78
3	Gossypin	5.258	20699957	98.07	1.00
4	RT:6.388	6.388	29417	0.14	1.21
5	RT:9.016	9.016	12531	0.06	1.71
Total			21107260	100.00	



INDOFINE Chemical Company, Inc.  
 121 STRYKER LANE  
 BLDG. 30, SUITE 1  
 HILLSBOROUGH, NJ 08844

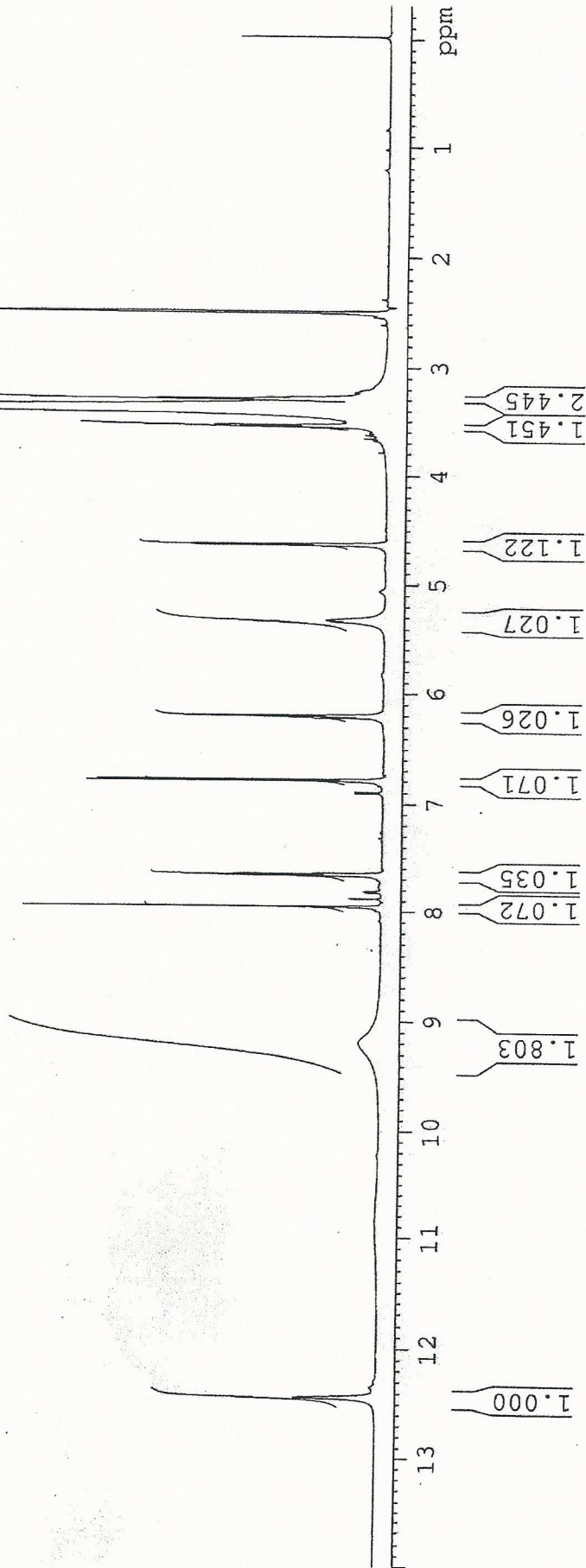
Catalog No.: G-002  
 Product Name: Gossypin  
 Lot No.: 98042



SOLVENT DMSO  
 NS 16  
 DS 0  
 SMH 9803.922 Hz  
 FIDRES 0.326819 Hz  
 AQ 1.5299480 sec  
 RG 20.2  
 DW 51.000 usec  
 DE 6.00 usec  
 TE 298.2 K  
 DI 1.50000000 sec  
 TD0 1

1H IN DMSO  
 AVANCE-600

===== CHANNEL f1 =====  
 NUC1 1H  
 P1 7.50 usec  
 PL1 2.60 dB  
 PL1W 6.62584448 W  
 SF01 600.3345228 MHz  
 SI 32768  
 SF 600.3300114 MHz  
 WDW EM  
 SSB 0  
 LB 0  
 GB 0  
 PC 1.00

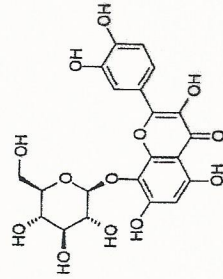






INDOFINE Chemical Company, Inc.  
121 STRYKER LANE  
BLDG. 30, SUITE 1  
HILLSBOROUGH, NJ 08844

Catalog No.: G-002  
Product Name: Gossypin  
Lot No.: 98042

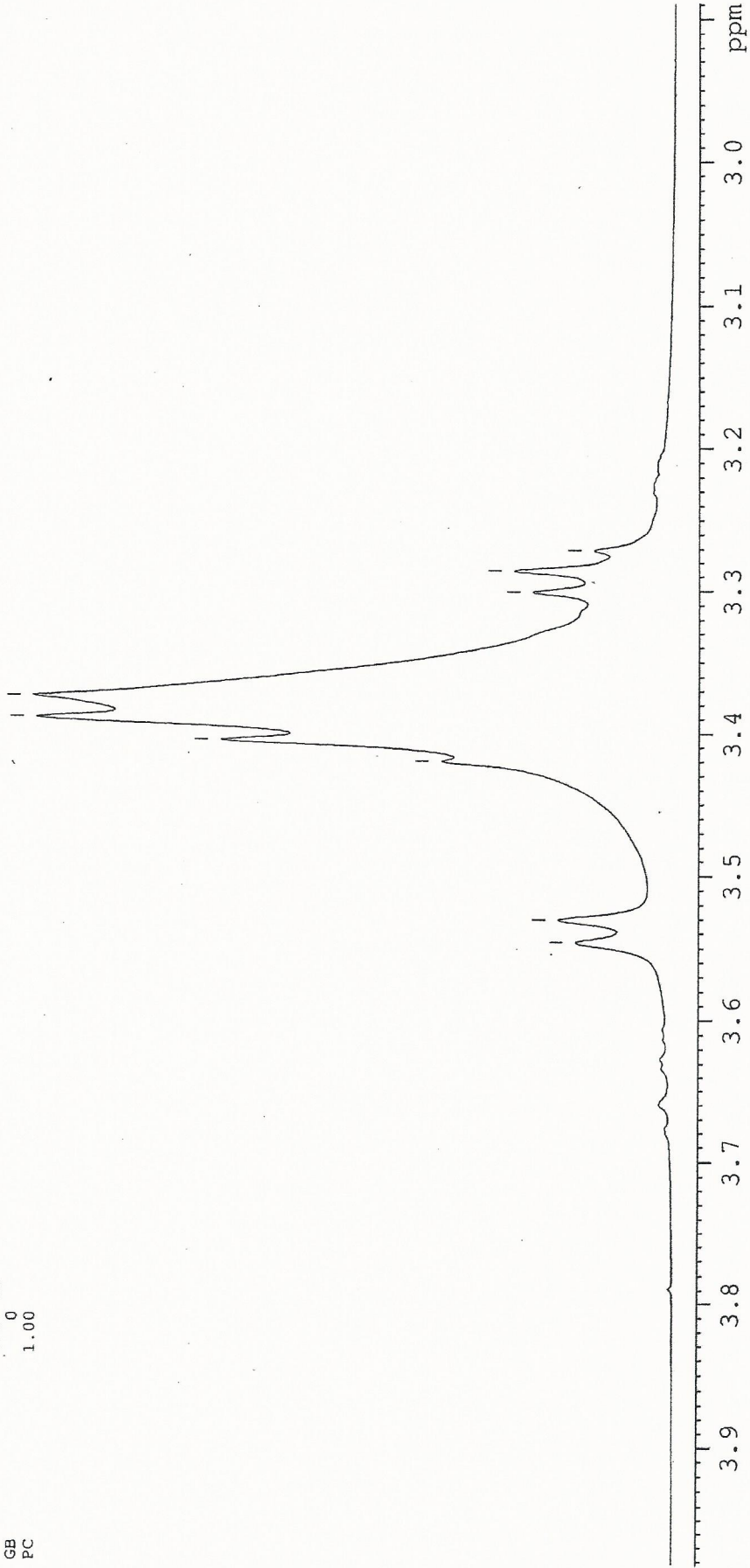


1H IN DMSO  
AVANCE-600

SOLVENT DMSO  
NS 16  
DS 0  
SWH 9803.922 Hz  
FIDRES 0.326819 Hz  
AQ 1.5299480 sec  
RG 20.2  
DW 51.000 usec  
DE 6.00 usec  
TE 298.2 K  
D1 1.50000000 sec  
TD0 1

===== CHANNEL f1 =====  
NUC1 1H  
P1 7.50 usec  
PL1 2.60 dB  
PL1W 6.62584448 W  
SF01 600.3345228 MHz  
SI 32768  
SF 600.3300114 MHz  
WDW EM  
SSB 0  
LB 0.30 Hz  
GB 0  
PC 1.00

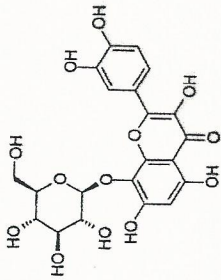
3.546  
3.531  
3.420  
3.404  
3.389  
3.374  
3.301  
3.286  
3.271





INDOFINE Chemical Company, Inc.  
 121 STRYKER LANE  
 BLDG. 30, SUITE 1  
 HILLSBOROUGH, NJ 08844

Catalog No.: G-002  
 Product Name: Gossypin  
 Lot No.: 98042



SOLVENT DMSO  
 NS 16  
 DS 0  
 SWH 9803.922 Hz  
 FIDRES 0.326819 Hz  
 AQ 1.5299480 sec  
 RG 20.2  
 DW 51.000 usec  
 DE 6.00 usec  
 TE 298.2 K  
 DI 1.50000000 sec  
 TD0 1

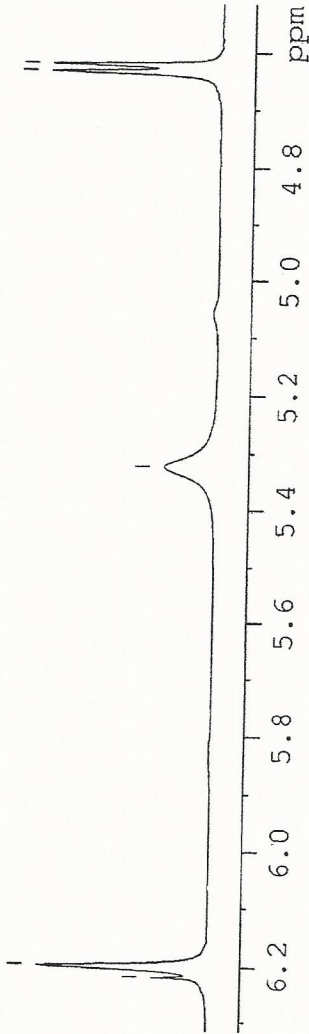
1H IN DMSO  
 AVANCE-600

==== CHANNEL f1 =====  
 NUC1 1H  
 P1 7.50 usec  
 PL1 2.60 dB  
 PL1W 6.62584448 W  
 SF01 600.3345228 MHz  
 SI 32768  
 SF 600.3300114 MHz  
 WDW EM  
 SSB 0  
 LB 0.30 Hz  
 GB 0  
 FC 1.00

4.623  
 4.636

5.326

6.221  
 6.200



7.949  
 7.953

7.666  
 7.663  
 7.652  
 7.649

6.798  
 6.784

